



**ANDERSEN**   
andersenhitches.com

# INSTALLATION MANUAL

## Ultimate 5th Wheel Connection Gooseneck Mount



**Parts 3225 & 3235 Gooseneck Mount, 24,000 lbs GTWR - 4,500 lbs Tongue**

### Table of Contents

Parts Illustration .....	Page 2
Important Safety Information .....	Page 3
Popular Add-ons for your Ultimate Connection .....	Page 3
Section 1: Preparation .....	Page 4
Section 2: Installing the Kingpin Coupler Block .....	Page 4
Section 3: Attaching the Remote Latch Cable .....	Page 5
Section 4: Installing the Base Unit .....	Page 6
Section 5: Removing the Base Unit .....	Page 6
Warranty Information .....	Page 7

Want to see a video of the install?



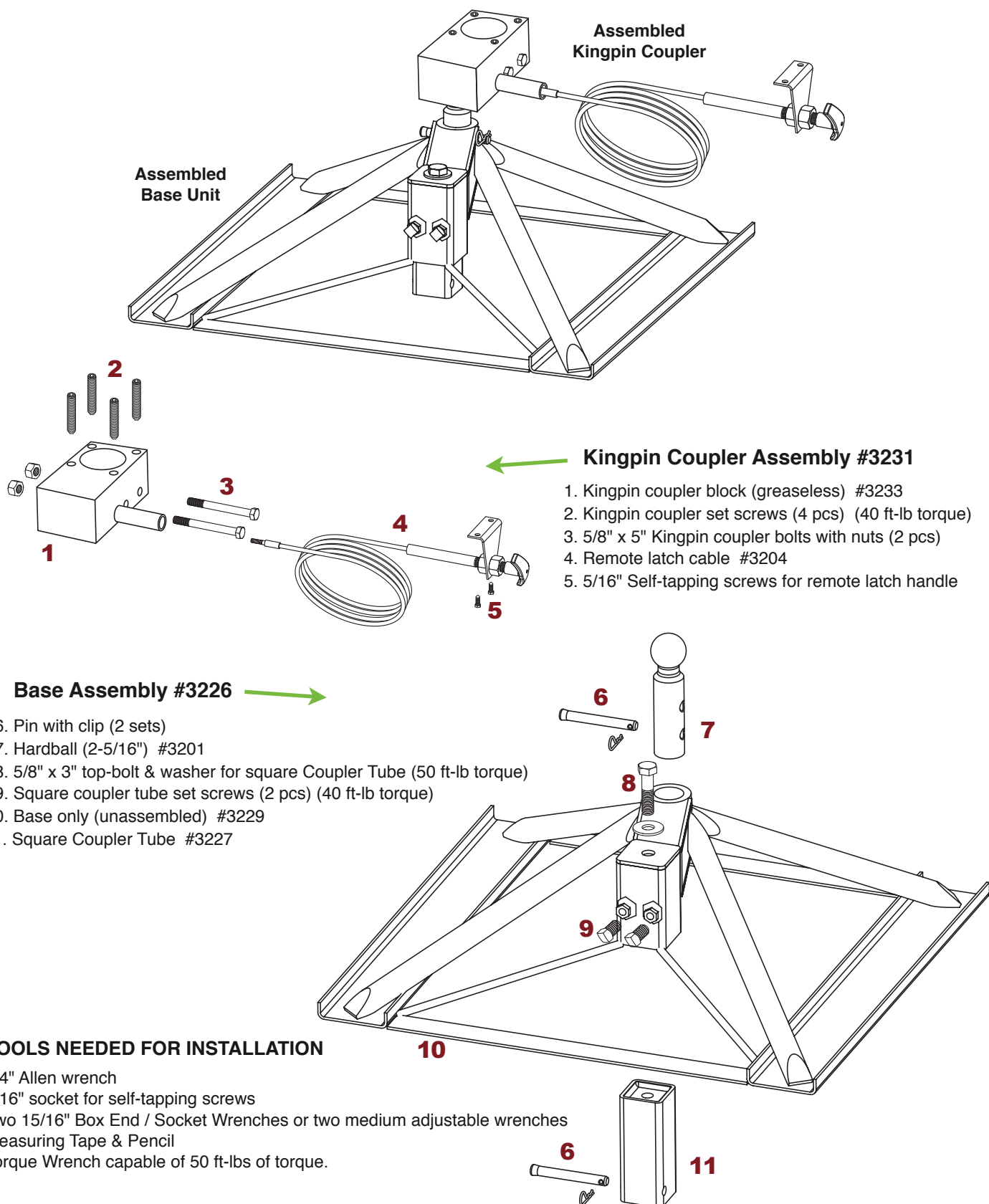
Use your SmartPhone to scan the  
QR Code above and to go to  
our Installation Videos on the web.

**www.AndersenHitches.com**  
**Customer Service: 1-800-635-6106**  
**customerservice.anderseninc.com**

**NOTE:**  
THERE IS NEVER A NEED TO  
GREASE BALL OR COUPLER

## PARTS ILLUSTRATION – ULTIMATE 5TH WHEEL CONNECTION, GOOSENECK MOUNT

The complete 3225 assembly includes all items listed on this page.  
The 3235 assembly features an extended square coupler (part #3234) instead of the standard square coupler.



Thank you for choosing the Ultimate 5th Wheel Connection! This indispensable product adapts a kingpin style 5th wheel trailer's pin box so it can attach to the raised 2-5/16" ball hitch – giving you a smooth, solid and safe driving experience. The Ultimate 5th Wheel Connection can be installed in a short amount of time with only a few tools.

If you happen to lose or damage any of your Ultimate 5th Wheel Connection parts, please visit your local Authorized Andersen Dealer or go to our website at [www.AndersenHitches.com](http://www.AndersenHitches.com) for replacements.

**Note: The Gooseneck ball and under bed system is NOT INCLUDED in this package. Please refer to the manufacturer's instructions regarding installation and use of your gooseneck system.**

## IMPORTANT SAFETY INFORMATION

Read the entire manual before towing a 5th wheel trailer using the Ultimate 5th Wheel Connection. Before each trip –and regularly during a trip– check all hardware, bolts and nuts for wear and fatigue. Make sure that they are all properly tightened and that all pins and clips are secured in place. Make sure that you have enough clearance for your pin box so that it does not hit your truck when turning.

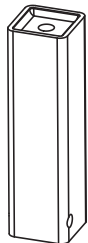
### WARNING

Failure to follow all safety warnings could result in severe injury or even death.

Make sure to read and understand all of the instructions of your trailer, tow vehicle, and hitching equipment. Also, follow all safety warnings, setup instructions, and maintenance before installing your hitch.

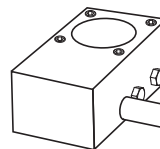
Before towing, make sure the kingpin coupler is coupled properly to the kingpin as well as the Ultimate 5th Wheel Connection ball –and secured in place using the remote latch.

## POPULAR ADD-ONS for your ULTIMATE 5th WHEEL CONNECTION



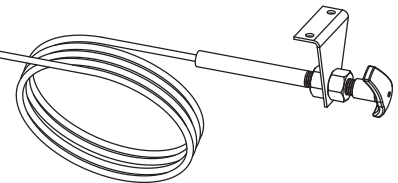
### #3234 Extended Coupler Tube

This tube adds an extra 4" to the coupler for installations that have a recessed gooseneck ball.



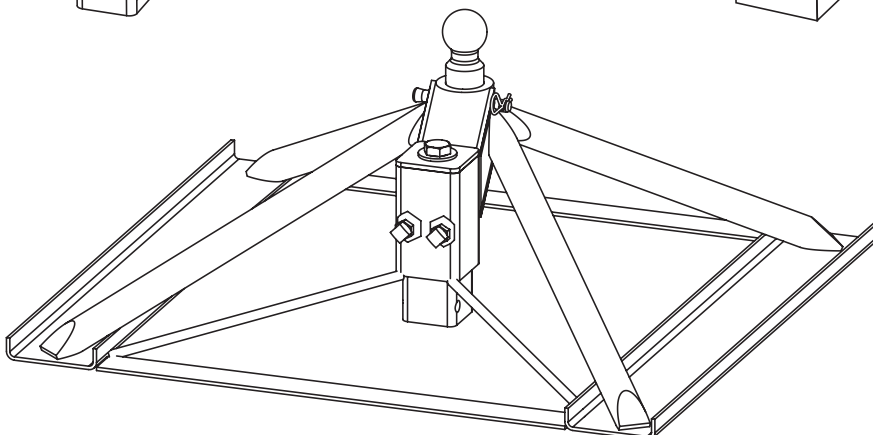
### #3231 Kingpin Coupler

Do you have more than one 5th Wheel? No problem! Add a Kingpin Coupler to your other trailer(s) for fast and easy hook-ups!



### #3226 Ultimate Base Assembly

Do you use more than one vehicle for towing? No problem! Add an Ultimate Base Assembly to your other truck(s) for fast and easy hook-ups!



## SECTION 1: PREPARATION

Unpack your Ultimate 5th Wheel Connection kit and compare it with the Parts List on the previous page. If it appears that there are missing or damaged items caused by shipping and handling, contact the freight carrier who delivered the unit for their damaged freight procedures. If any component appears to be missing or damaged please contact us immediately.

## SECTION 2: INSTALLING THE KINGPIN COUPLER BLOCK



2-1. Place the kingpin coupler block on the kingpin as illustrated in the pictures to the left. Make sure the ball socket is face-down. For most 5th wheel installations, place the greaseless opening towards the front of the kingpin.

**IMPORTANT:** Pay close attention to the length of the pin box. If there's a possibility that it might hit the tailgate or side boards of your tow vehicle, then place the greaseless opening of the coupler block *behind* the kingpin.

**Do not attach the remote latch cable yet.**



2-2. Insert the two 5" x 5/8" kingpin bolts into their holes to hold the coupler block on the kingpin and place the nuts on the two bolts as illustrated on the left. Push the bolts all the way flush to the block, but DO NOT fully tighten the nuts yet.

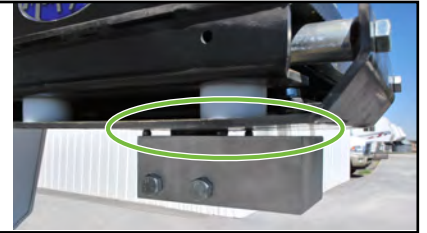


2-3. Make sure the coupler block is centered to the pin box before tightening the 4 set screws.



2-4. Using a 1/4" allen wrench, tighten the 4 set screws to about 40 ft-lbs of torque.

NOTE: Because kingpins vary in height, some blocks will have space between the coupler block and the kingpin plate (see picture on right) while others will be flush. This is normal and does not impact the performance of your Ultimate Connection in any way.



2-5. Now tighten the nuts on both kingpin bolts until they are snug.

### SECTION 3: ATTACHING THE REMOTE LATCH CABLE

#### IMPORTANT

The remote latch bracket should be installed within 30" of the center line of the ball socket to prevent the cable and bracket from being crushed by the pickup's sideboards. This can happen when the trailer and the pickup become twisted in reference to each other on uneven surfaces often found in campgrounds.

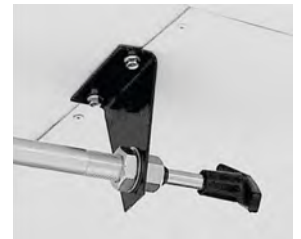
Use a 5/16" socket to install the two self-tapping screws provided, and install as shown left. For best results, install the screws in the frame of the trailer, or the screws may eventually pull out of the thin fiberglass or aluminum sheet metal skin of the trailer. Using a magnet is a great way to help locate the frame.



#### Using the remote latch cable:

**To engage**, simply turn the handle to unlock it, push the handle until it's all the way in and then turn it fully in either direction to lock in place.

**To disconnect**, turn the handle to unlock it, pull the handle until it's all the way out and then turn it fully in either direction to lock in place.



**IMPORTANT: DO NOT FORCE THE HANDLE INWARD.** If the handle will not push in fully, check to make sure that the receiver is fully seated down over the 2-5/16" ball.

Due to tight tolerances, if the trailer and receiver are angled too much in reference to each other, the receiver may not fully seat on the ball. This also applies to uncoupling the receiver as well. If the truck and trailer are angled too much in reference to each other, the receiver may become 'stuck' on the ball. To alleviate this problem, ensure that the truck and trailer are more or less level in reference to each other. Raise the trailer up to clear the ball, disconnect your wiring harnesses and any safety cables and chains, then drive your truck out from under the trailer.



## SECTION 4: INSTALLING THE BASE UNIT

**Note:** Before installation make sure that the gooseneck ball in the bed of the truck is in the up position and locked into place.

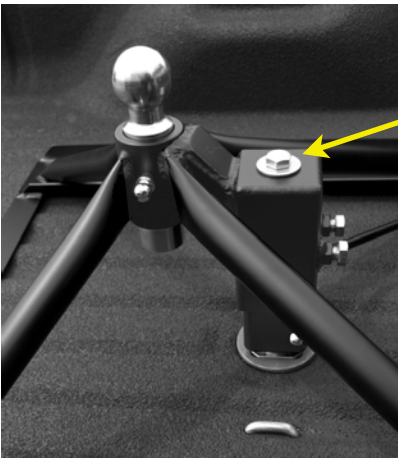


4-1. Place the Ultimate Connection in the bed of your truck so that the ball is closest to the tailgate.

Square up the hitch before tightening it down.



4-2. Place the pin through the lower coupler sleeve under the gooseneck ball and secure it in place with the hairpin clip. Push the entire base forward towards the cab of the truck until it will not go any further.



4-3. Using a 15/16" socket wrench, tighten the top bolt of the square coupler to 50 ft-lbs of torque. This will ensure that the coupler is pulling up on the gooseneck ball and holding the ultimate connection firmly to the bed of the truck.



4-4. Using a 15/16" socket wrench, tighten the two square coupler set bolts to 40 ft-lbs of torque to take out any play.



### **NOTE:**

THERE IS NEVER A NEED TO GREASE BALL OR COUPLER

## SECTION 5: REMOVING THE BASE UNIT

Once you have disengaged the kingpin coupler and your 5th wheel trailer is out of the way, you can remove the base and free up your truck bed by simply reversing steps 2–4 as follows: Loosen the two coupler set bolts, loosen the coupler top bolt and remove the square coupler pin.

## Ultimate 5th Wheel Connection Limited Warranty

### WARNING

The weight ratings and certifications for the Ultimate 5th Wheel Connection are intended to represent only the product capability and in no way reflect the capacity or ratings of any towing system it is used with. In many cases, the rating of our product will be greater than those of the vehicle towing system, hitch, and trailer being used with our accessory. We strongly advise the consumer and operator to learn the ratings of the various components of the towing system and to NOT exceed the limits of the lowest rated component.

**LIMITED ONE YEAR WARRANTY:** Andersen Mfg. Inc. (“ANDERSEN”) warrants to the original purchaser (“BUYER”), the Ultimate 5th Wheel Connection (“PRODUCT”) against latent defects in materials and workmanship under normal use and service, rust, corrosion and ordinary wear and tear excepted, from the date of retail purchase for one year, subject to the limitations as set forth below.

If the PRODUCT is latently defective ANDERSEN will replace or repair the PRODUCT and/or associated parts when a proper Return Merchandise authorization (RMA) number is obtained by the BUYER, and the PRODUCT is returned with transportation charges prepaid to ANDERSEN manufacturing plant.

ANDERSEN shall not be required to replace or repair any items damaged as a result of improper installation, alteration, unreasonable use, or improper maintenance including, without limitation, loading the PRODUCT beyond the PRODUCT’s rated load capacity, damaged caused by an accident, sudden impact arising from a collision or other abnormal occurrences. BUYER is responsible for maintenance checks to the PRODUCT on a regular basis.

Since it is beyond ANDERSEN’s control as to what trailers or vehicles the PRODUCT may be used with, and what condition said trailers or vehicles may be in, ANDERSEN will not warrant or assume liability for damages incurred. It is the responsibility of the BUYER to have the trailer braking system checked and maintained on a regular basis. ANDERSEN does not warrant against discontinuation of PRODUCT, acts of God, defects in items or components not manufactured by ANDERSEN, or against damages resulting from such non-ANDERSEN made products or components. ANDERSEN passes on to BUYER the warranty it received (if any) from the maker thereof of such non-ANDERSEN made products or components. This warranty also does not apply to PRODUCT upon which repairs have been affected or attempted by persons other than pursuant to written authorization by ANDERSEN .

THIS WARRANTY IS EXCLUSIVE. To the extent allowed by law, ANDERSEN shall not be liable for any incidental, consequential, or any other damages including, without limitation, breach of any implied warranty, merchantability, or fitness of the PRODUCT for a particular purpose. The sole and exclusive obligation of ANDERSEN shall be to repair or replace the defective PRODUCT in the manner stated above. ANDERSEN shall not have any other obligation with respect to the PRODUCT or any part thereof, whether based on contract, tort, strict liability, or otherwise. It is understood that the seller’s liability, whether in contract, in tort, under any warranty, in negligence or otherwise, shall not exceed the return of the wholesale amount of the purchase price paid by the BUYER. Under no circumstances, whether based on this Limited Warranty or otherwise, shall ANDERSEN be liable for incidental, special, or consequential damages. The price stated for the PRODUCT is considered in limiting ANDERSEN’s liability.

ANDERSEN’s employees, representative’s or Dealers ORAL OR OTHER WRITTEN STATEMENTS DO NOT CONSTITUTE WARRANTIES, shall not be relied upon by BUYER, and are not a part of the contract for sale or this limited warranty.

This warranty does not include labor charges nor does it include transportation charges for returning the PRODUCT to the consumer. Removal, shipping and installation of the replacement PRODUCT or replacement parts shall be at BUYER’s expense.

Return Merchandise Authorization (RMA) and warranty procedure may be obtained by visiting Andersen's website at [www.andersenhitches.com](http://www.andersenhitches.com) and clicking on ‘Return Policy’ at the bottom of the page, or by calling our customer service department at 1-800-635-6106.



**Built Tough... Built to Last**

**SUPPORT USA JOBS**



**Made in USA**

**See our full line of towing products at  
[www.AndersenHitches.com](http://www.AndersenHitches.com)**



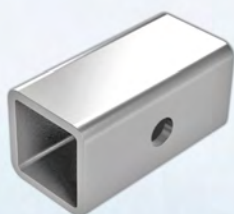
**Aluminum Rapid Hitch**  
*Greaseless & Standard*



**Camper Leveler** (includes chock)  
*Level your trailer on the first try!*



**EZ Adjust Hitch & EZ HD**  
*from 10K to 14K Heavy Duty*



**2" Adapter Sleeve**  
*'No Rust' aluminum  
for 2-1/2" receivers*



**'No Sway, No Bounce' Weight Distribution Hitch**  
*Simple set up! Smoothest, quietest ride available. Up to 14K*



**Alumistinger**  
*'No Rust' Ball Mounts (2"-10")*

**Sign up for our FREE DRAWING!**  
**Win a Rapid Hitch or \$150 in cash!**

Scan this →  
QR code with  
your smartphone  
and enter your info



OR - Visit us on the web at:  
[www.andersenhitches.com/drawing](http://www.andersenhitches.com/drawing)

OR - Email us at:  
[drawing@andersenhitches.com](mailto:drawing@andersenhitches.com)



**[www.AndersenHitches.com](http://www.AndersenHitches.com) • 1.800.635.6106**